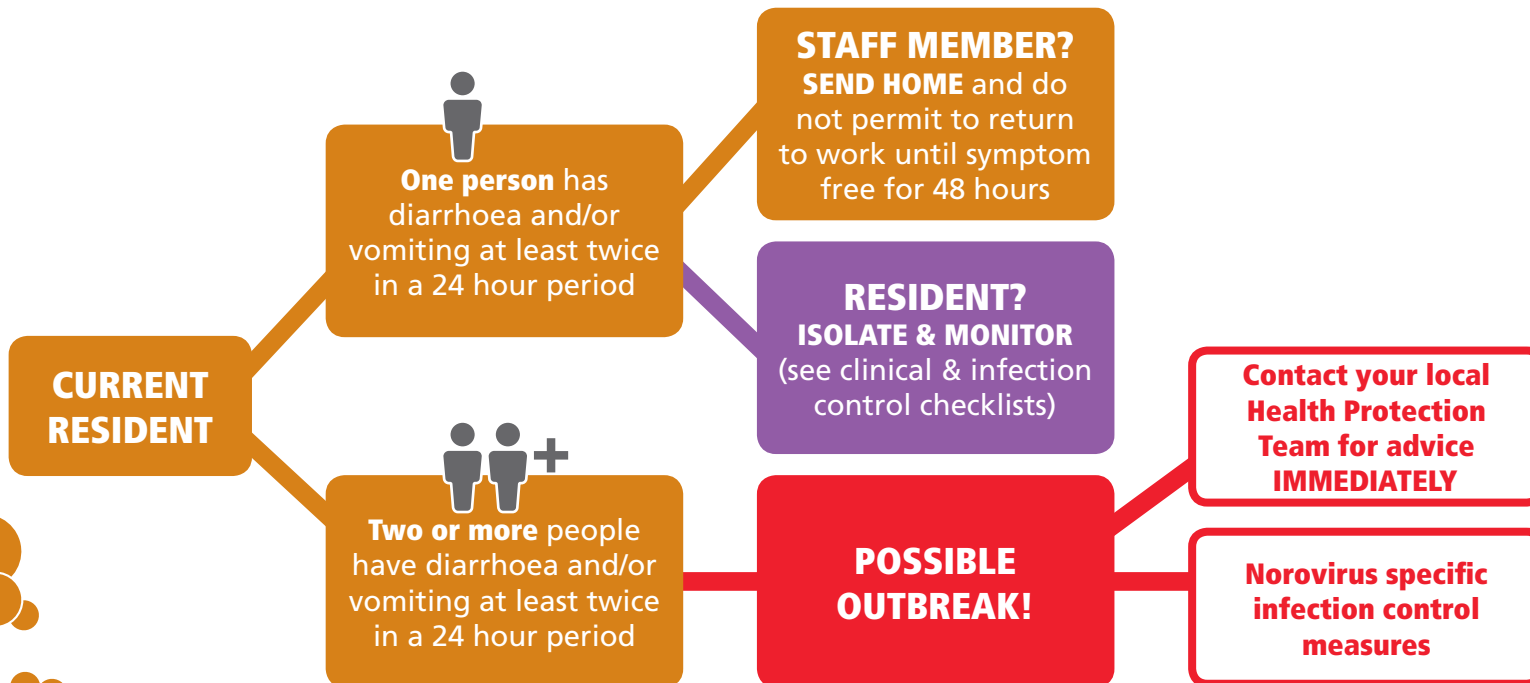
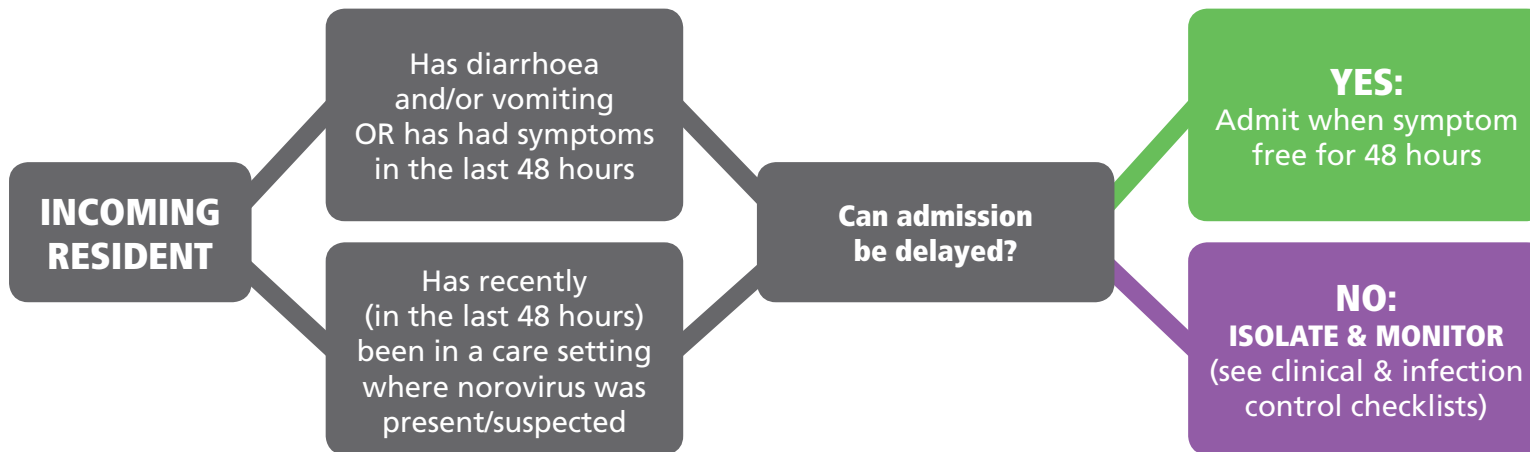


Norovirus Prevention - Flowchart



CLINICAL CHECKLIST:

- Contact resident's GP
- Consider stopping use of laxatives (with GP)
- Consider anti-sickness medication (with GP)
- Record time and date of first symptom
- Keep a daily stool chart
- Check for signs of dehydration and ensure fluids are taken

INFECTION CONTROL CHECKLIST:

- Isolate in bedroom with designated commode and doors closed
- Enhanced cleaning with 1000ppm available chlorine disinfectant
- Wash hands before and after every care episode
- Wash hands after cleaning
- Wash hands prior to entering/leaving a resident's room
- Wear disposable gloves and aprons for all care episodes & cleaning